



timestart[®] 2020

time and absence management



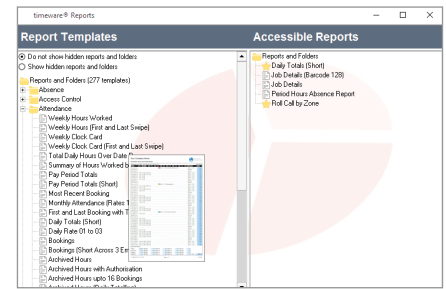
timeware[®]
workforce management solutions

SUPrema
BIOMETRICS

Reports and exports...

timestart's major strength is its customisation ability -there are no other products in the same market sector that offer such a high level of personalisation.

The timestart® report module provides a number of clear and concise user editable reports, forms and graphs as standard. The timestart® export module provides an easy way to pass timestart® data to an external application such as Microsoft Excel for the flexible development of ad-hoc reports.



Suprema biometrics...

The most comprehensive employee attendance module requires the best attendance devices so we've integrated our software with world-class biometric manufacturer, Suprema Inc.

The Suprema BioLite N2 is our recommended 'go-to' device for the majority of attendance projects, it's IP67 rated and ideal for installing both inside and outside a building.

Alternatively, if a non-contact solution is preferred, the Suprema FaceLite is ideally suited for indoor use.

Both devices incorporate a screen to display the current time and date but most importantly, the employees name as they book in and out!



BioLite N2
Ideal for fast throughput of staff.
Perfect for attendance, access control and assembly points.
Ideal for indoor and secure outdoor locations.
IP67 rated.
Supports various proximity card tech.

SUPREMA INTEGRATION PARTNER

FaceLite
Ideal for sites with lower number of staff.
Non-contact.
Perfect for indoor attendance.
Supports various proximity card tech.



About timeware® ...

Our company...

Based in Rochdale, North Manchester, timeware® (UK) Ltd is a leading manufacturer of workforce management solutions, supplying over seven thousand customers across the UK, Ireland and Sub-Saharan Africa.

Tracing its origins back to the late 1980's, timeware® (UK) Ltd employs 18 people in its development team and works with a network of selected partners to provide the best service to its customer base.

Our software and services...

We have developed two trademarked products:

timestart®: attendance and absence management for single site businesses with a turnover under £1.5m.

timeware® Professional: workforce management solutions for large, multi-location organisations.

At timeware® (UK) Ltd, product development never stops! We receive development suggestions from the timeware® community on a regular basis and we like to feel that our development team consists not only of just our employees, but the thousands of individual timeware® users around the world!

Our service philosophy...

Customer service is the cornerstone of our business model. Over 90% of our new business originates from existing client referrals, a statistic we are extremely proud of.

We invest heavily in the development of the customer care teams, both technical and administrative. Many customers have worked with timeware® for over twenty years - a true testament to our 'can-do, will-do' ethos.

For more information about timeware® (UK) Ltd and the products we provide, please contact the Projects team on +44 (0)1706 659368 or connect to me via LinkedIn.



Simon Birchall
Managing Director
timeware® (UK) Ltd



Connect to me on [LinkedIn](#)



timestart[®] 2020

time and absence management

Head office

timeware[®] UK Ltd.

3 Fieldhouse Road
Rochdale, OL12 0AD
United Kingdom

General enquiries:

Tel: +44 (0)1706 659368

Web: www.timeware.co.uk

Email: sales@timeware.co.uk


suprema INTEGRATION PARTNER

Genetec[™]

sage
Development Partner

 Follow us on LinkedIn
timeware (UK) Ltd



 Subscribe to our YouTube channel
timeware UK

